

BGC



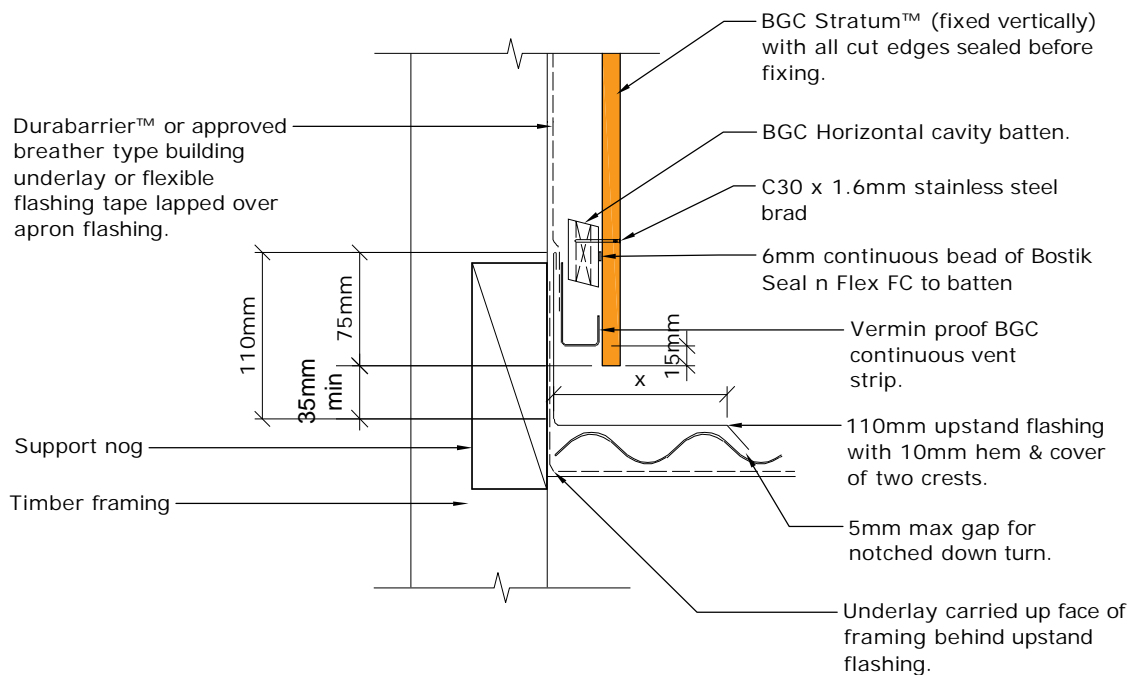
Fibre Cement

Cavity Batten Note:

Refer to cavity batten layout for batten sizes, types, spacing's & fixings

Cladding fixing note:

Refer to cladding fixing layout for all fixing types & spacing's



Note:

x = Refer to NZBC E2 / AS1 Table for flashing cover requirements

PROFILE **BGC Stratum™ and Stratum™ Duo (Vertical Installation)**

DETAIL **Parallel Apron Flashing Detail Cavity Construction**

DATE **Oct 2019**

SCALE **1:5 @ A4**

DETAIL NO. **SVB-23**