

# BGC



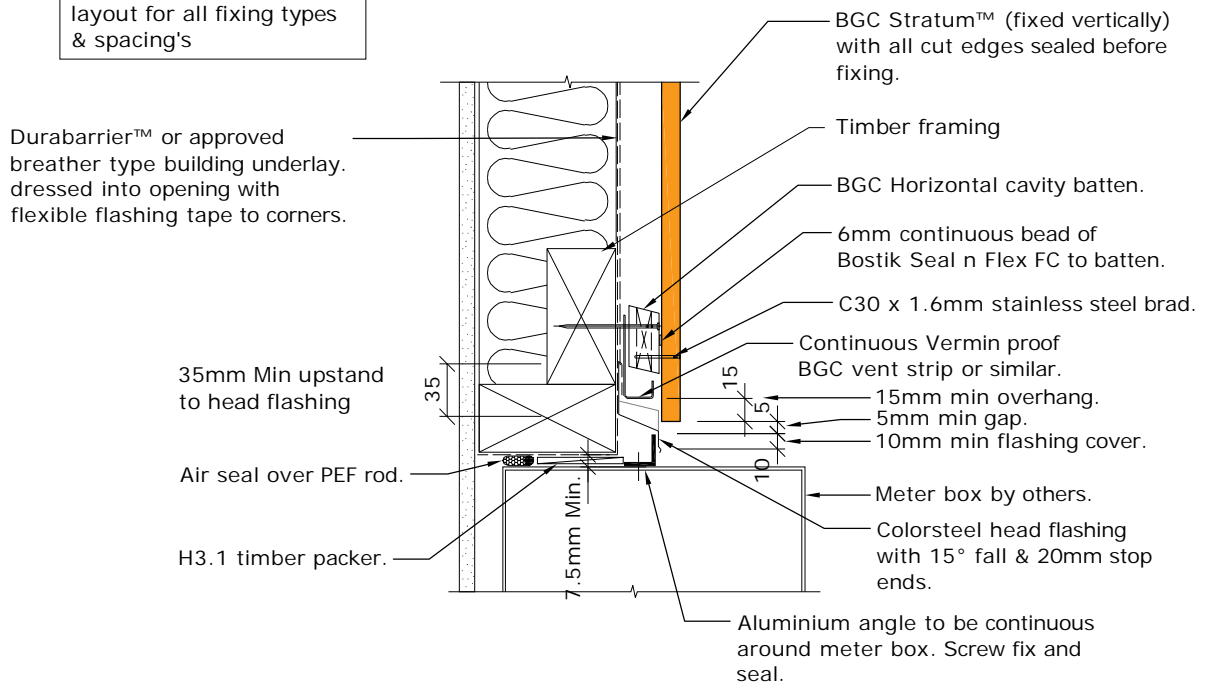
# Fibre Cement

**Cavity Batten Note:**

Refer to cavity batten layout for batten sizes, types, spacing's & fixings

**Cladding fixing note:**

Refer to cladding fixing layout for all fixing types & spacing's



Note. Where DurabARRIER™ is used flashing tape must be applied to the entire opening

PROFILE **BGC Stratum™ and Stratum™ Duo (Vertical Installation)**

DETAIL **Meter Box Head Detail Cavity Construction**

DATE Oct 2019

SCALE 1:5 @ A4

DETAIL NO. **SVB-16**