

BGC



Fibre Cement

Cavity Batten Note:

Refer to cavity batten layout for batten sizes, types, spacing's & fixings

Cladding fixing note:

Refer to cladding fixing layout for all fixing types & spacing's

Fold ends of head flashing to form stop ends

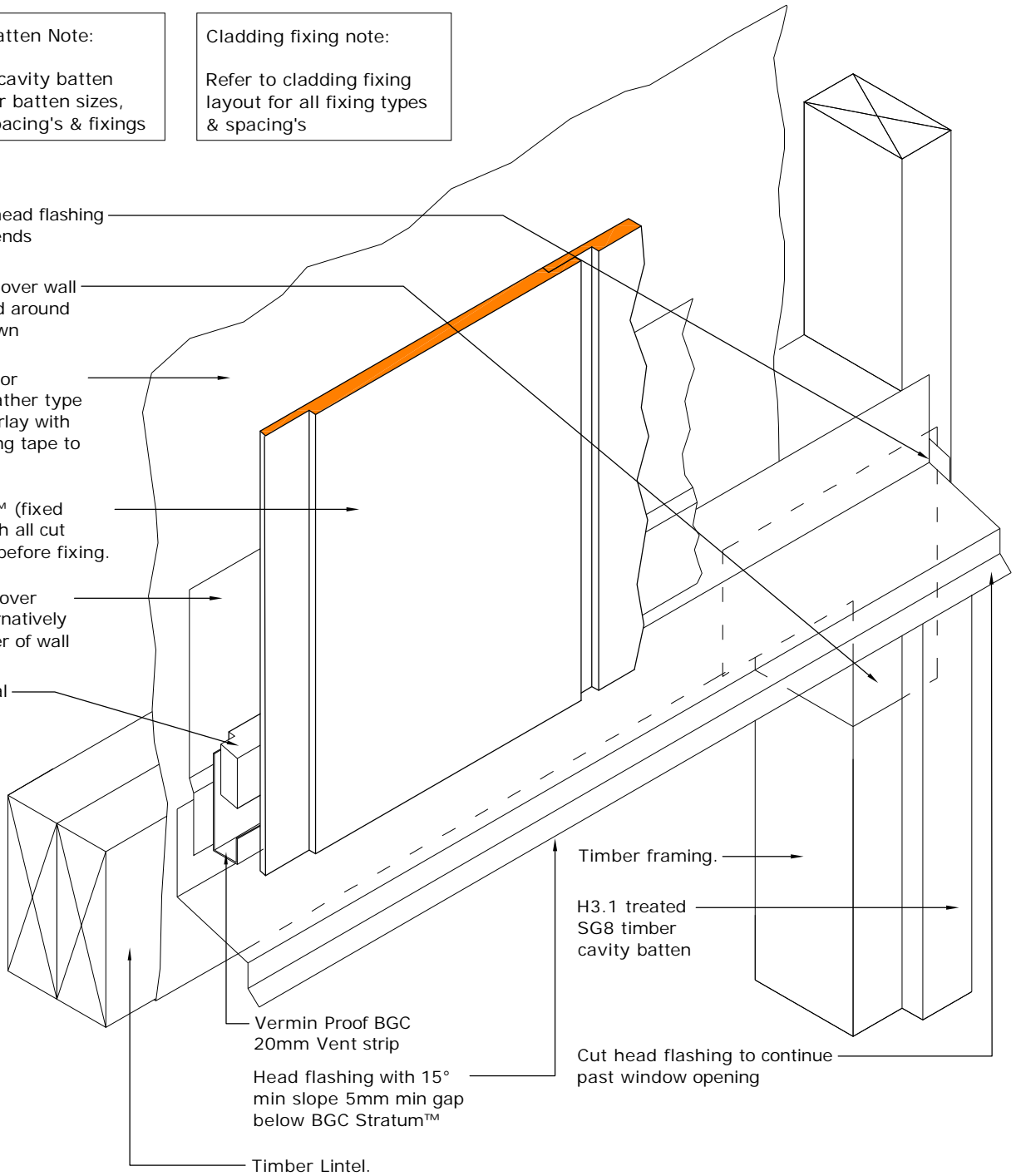
Flashing tape over wall underlay fitted around corner as shown

Durabarrier™ or approved breather type Building underlay with flexible flashing tape to corners.

BGC Stratum™ (fixed vertically) with all cut edges sealed before fixing.

Flashing tape over flashing (alternatively use extra layer of wall underlay)

BGC Horizontal cavity Batten.



Note where Durabarrier™ is used flashing tape must be applied to the entire opening

PROFILE

**BGC Stratum™ and Stratum™ Duo
(Vertical Installation)**

DETAIL

**Window Head/Jamb Junction Detail
Cavity Construction**

DATE

Oct 2019

SCALE

1:5 @ A4

DETAIL NO.

SVB-12