

BGC



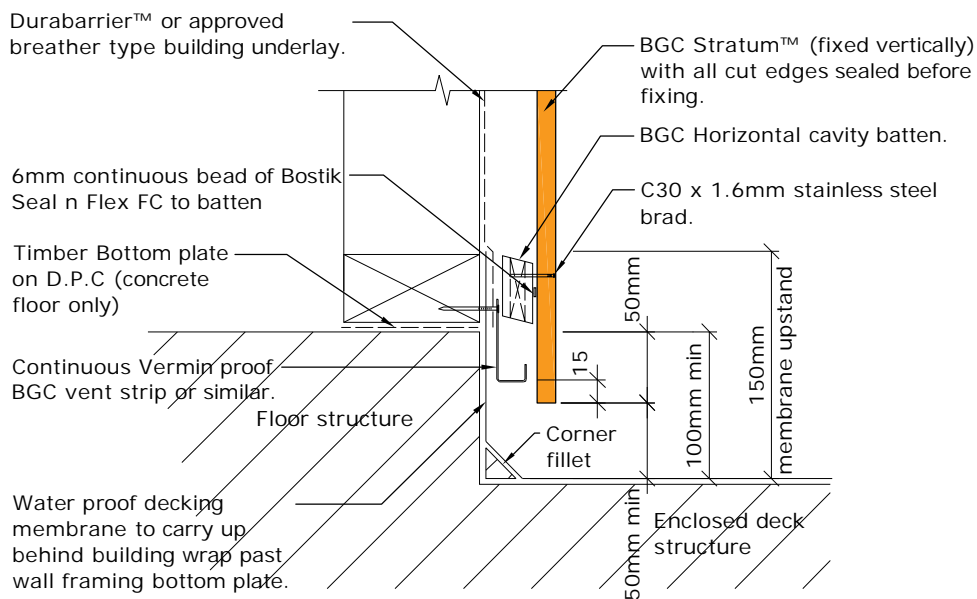
Fibre Cement

Cavity Batten Note:

Refer to cavity batten layout for batten sizes, types, spacing's & fixings.

Cladding fixing note:

Refer to cladding fixing layout for all fixing types & spacing's



PROFILE **BGC Stratum™ and Stratum™ Duo**
(Vertical Installation)
DETAIL **Enclosed Deck Detail**
Cavity Construction

DATE Oct 2019
SCALE 1:5 @ A4
DETAIL NO. **SVB-11**