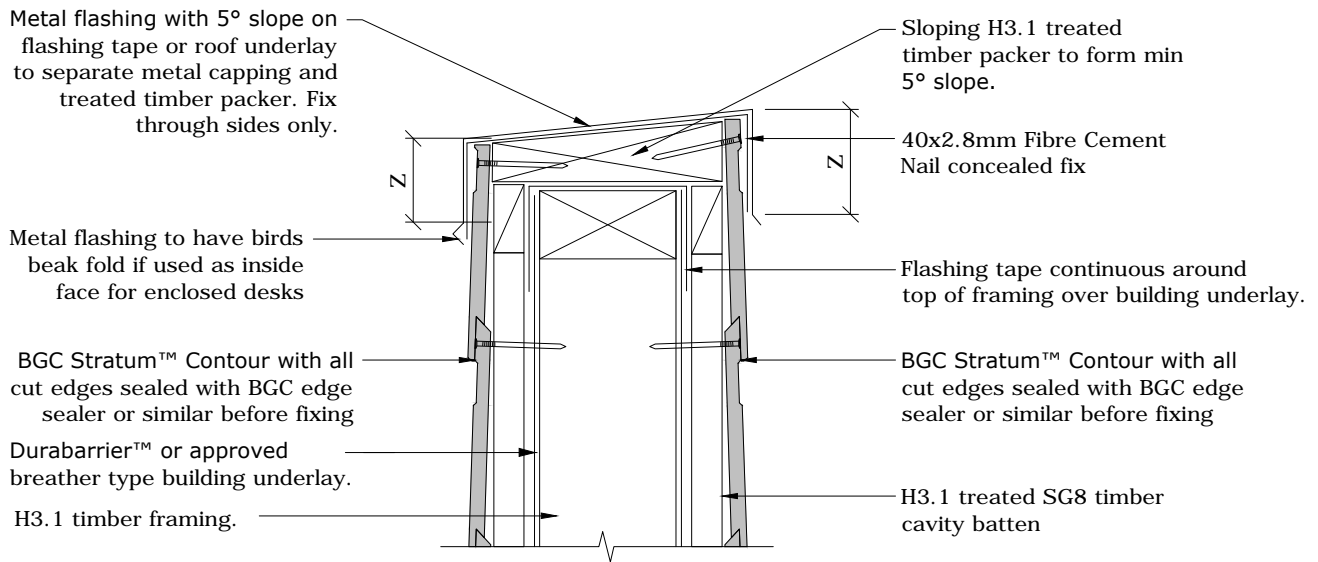




# Fibre Cement

**Cavity Batten Note:**  
 Refer to cavity batten layout for batten sizes, types, spacing's & fixings

**Cladding fixing note:**  
 Refer to cladding fixing layout for all fixing types & spacing's



**Note:**  
 Z = Refer to NZBC E2 / AS1 Table 7 for flashing cover requirements

PROFILE **BGC Stratum™ Contour**

DATE **Feb 2014**

DETAIL **Enclosed Balustrade/Parapet Detail  
 Cavity Construction**

SCALE **1:5 @ A4**

DETAIL NO. **STC-25**