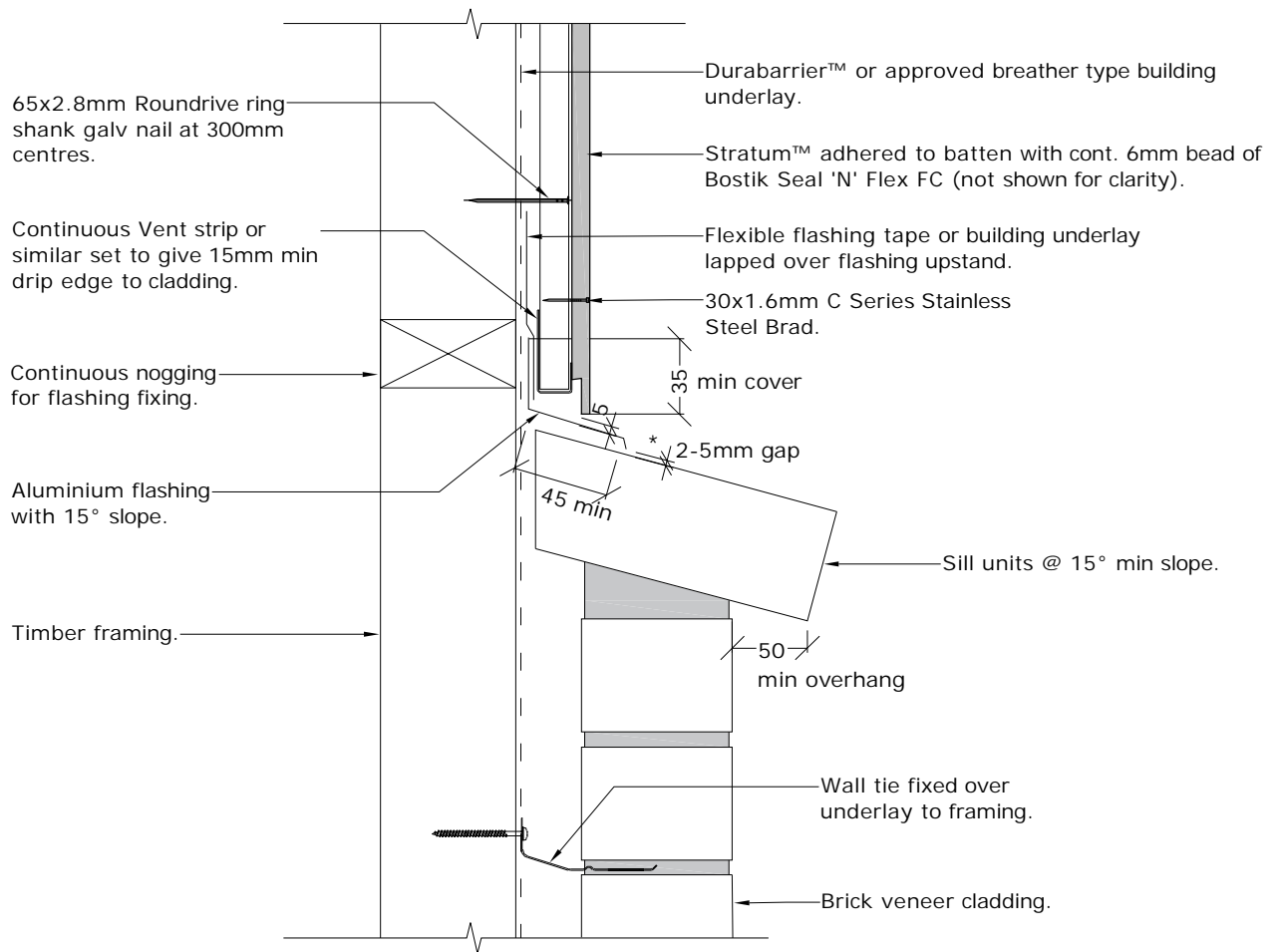




Fibre Cement

Cavity Batten Note:
Refer to cavity batten layout for batten sizes, types, spacing's & fixings.

Cladding fixing note:
Refer to cladding fixing layout for all fixing types & spacing's



PROFILE **BGC Stratum™ and Stratum™ Duo**
DETAIL **Brick veneer - Stratum™ Junction Detail Cavity Construction**

DATE **Oct 2019**
SCALE **1:5 @ A4**
DETAIL NO. **ST-38**