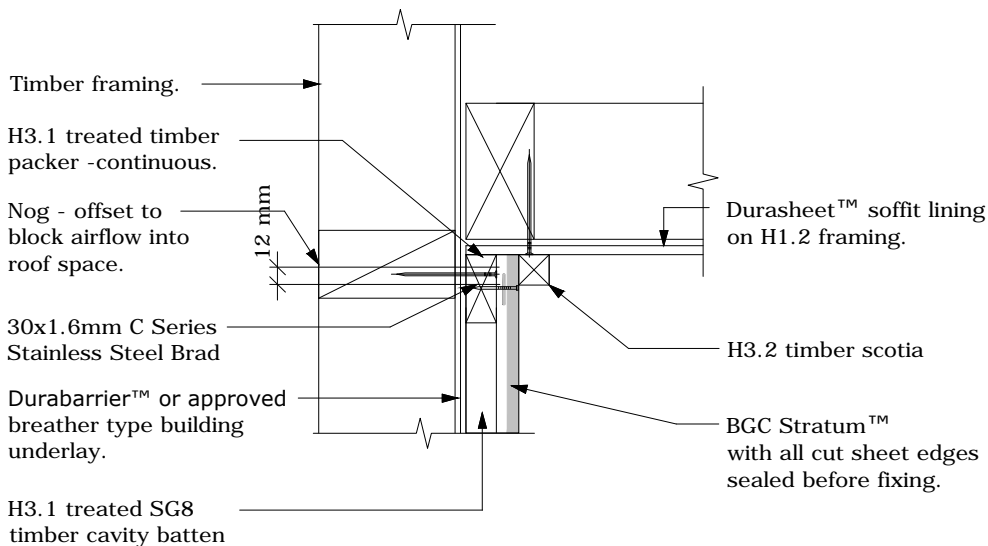


Cavity Batten Note:

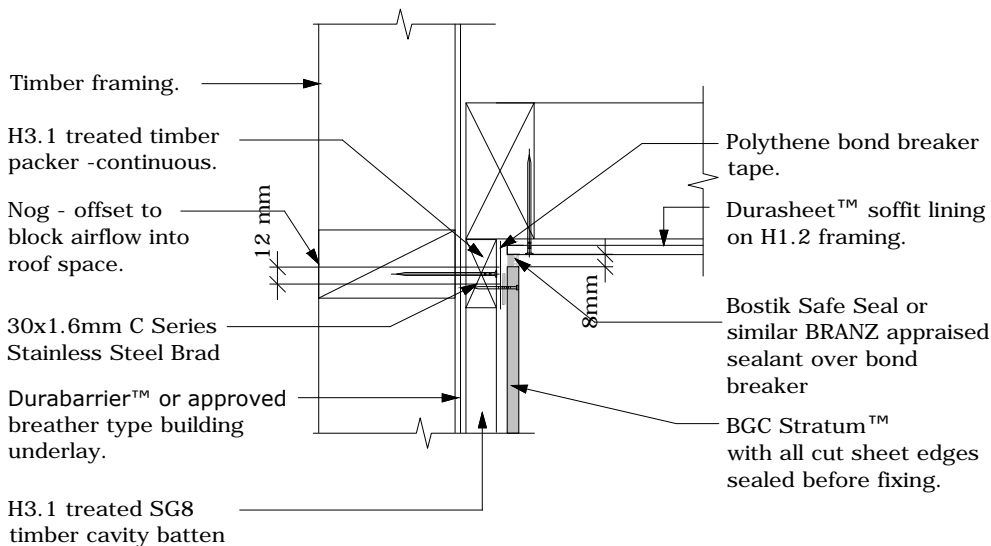
Refer to cavity batten layout for batten sizes, types, spacing's & fixings

Cladding fixing note:

Refer to cladding fixing layout for all fixing types & spacing's



Scotia option



Sealant option

PROFILE **BGC Stratum™ and Stratum™ Duo**

DATE **Jan 2014**

DETAIL **Soffit Detail
Cavity Construction**

SCALE **1:5 @ A4**

DETAIL NO. **ST-20**