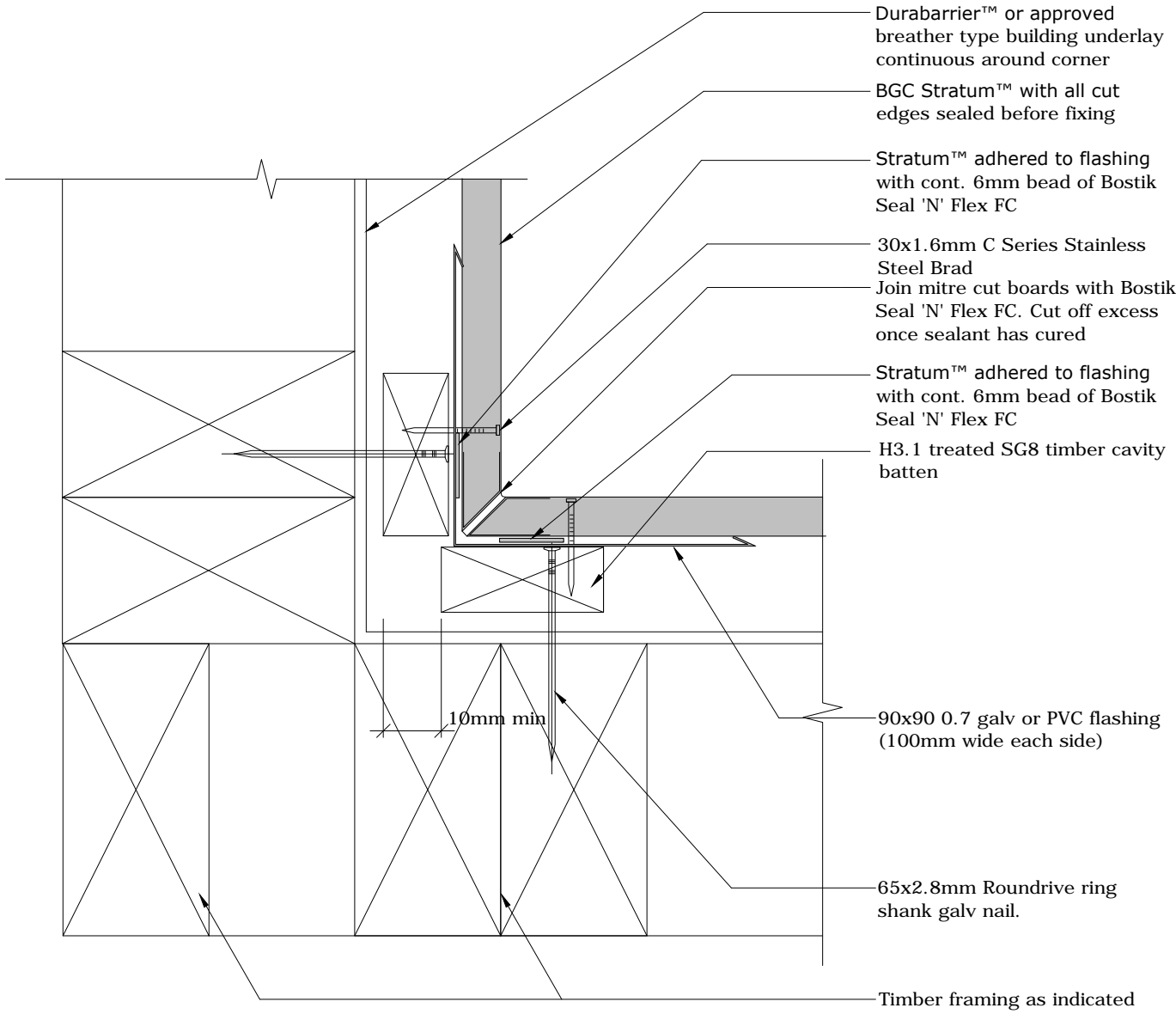




Fibre Cement



- DurabARRIER™ or approved breather type building underlay continuous around corner
- BGC Stratum™ with all cut edges sealed before fixing
- Stratum™ adhered to flashing with cont. 6mm bead of Bostik Seal 'N' Flex FC
- 30x1.6mm C Series Stainless Steel Brad
- Join mitre cut boards with Bostik Seal 'N' Flex FC. Cut off excess once sealant has cured
- Stratum™ adhered to flashing with cont. 6mm bead of Bostik Seal 'N' Flex FC
- H3.1 treated SG8 timber cavity batten
- 90x90 0.7 galv or PVC flashing (100mm wide each side)
- 65x2.8mm Roundrive ring shank galv nail.
- Timber framing as indicated

Note:
 Join mitre cut boards with Bostik Seal n Flex FC. Push hard together and cut off excess once cured

Cavity Batten Note:
 Refer to cavity batten layout for batten sizes, types, spacing's & fixings.

PROFILE **BGC Stratum™ and Stratum™ Duo**

DETAIL **Internal Corner Mitre Cavity Construction**

DATE **Jan 2014**

SCALE **1:2 @ A4**

DETAIL NO. **ST-12**