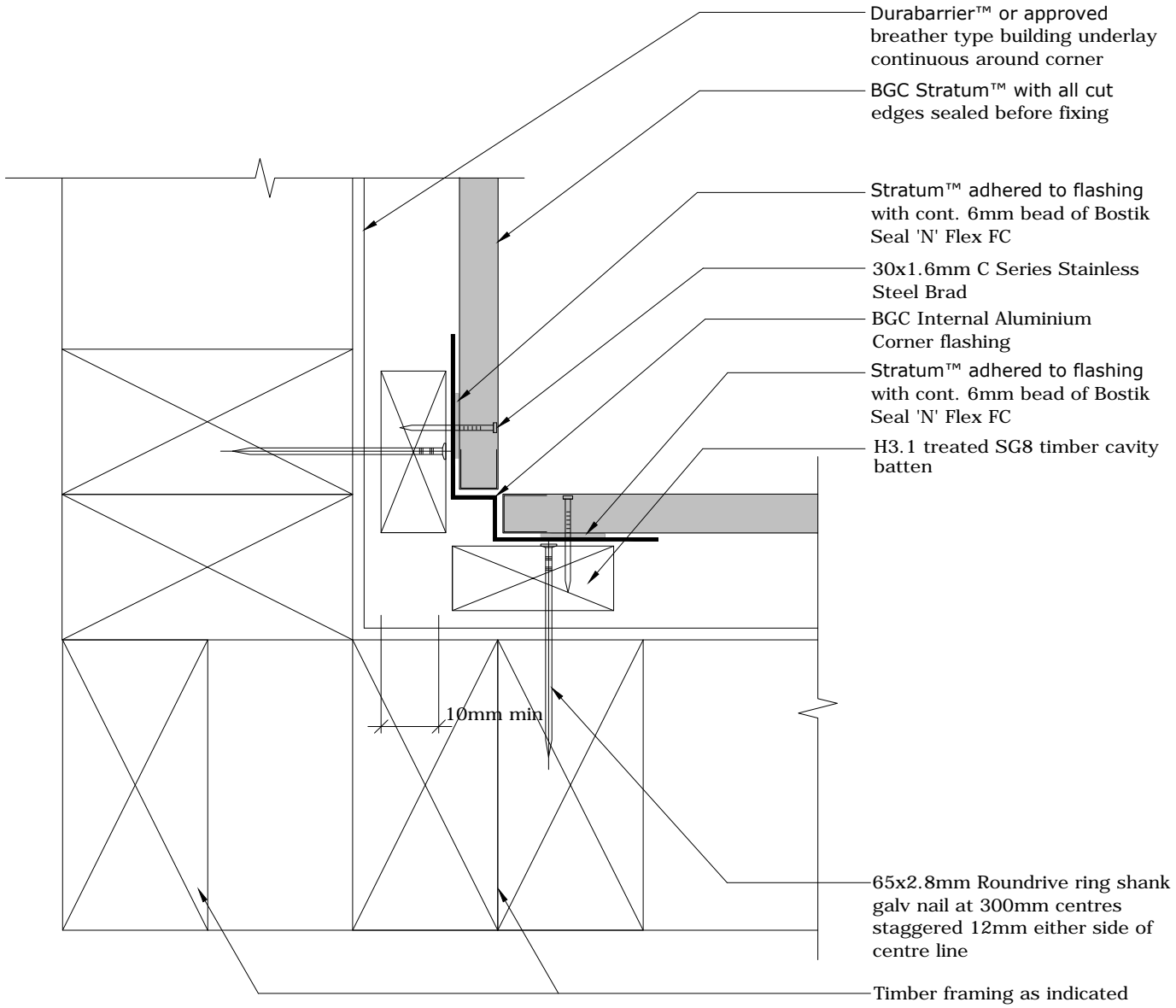




Fibre Cement



- DurabARRIER™ or approved breather type building underlay continuous around corner
- BGC Stratum™ with all cut edges sealed before fixing
- Stratum™ adhered to flashing with cont. 6mm bead of Bostik Seal 'N' Flex FC
- 30x1.6mm C Series Stainless Steel Brad
- BGC Internal Aluminium Corner flashing
- Stratum™ adhered to flashing with cont. 6mm bead of Bostik Seal 'N' Flex FC
- H3.1 treated SG8 timber cavity batten
- 65x2.8mm Roundrive ring shank galv nail at 300mm centres staggered 12mm either side of centre line
- Timber framing as indicated

Cavity Batten Note:
 Refer to cavity batten layout for batten sizes, types, spacing's & fixings.

PROFILE **BGC Stratum™ and Stratum™ Duo**
 DETAIL **Internal Corner Aluminium Trim Cavity Construction**

DATE Jan 2014
 SCALE 1:2 @ A4
 DETAIL NO. **ST-11**