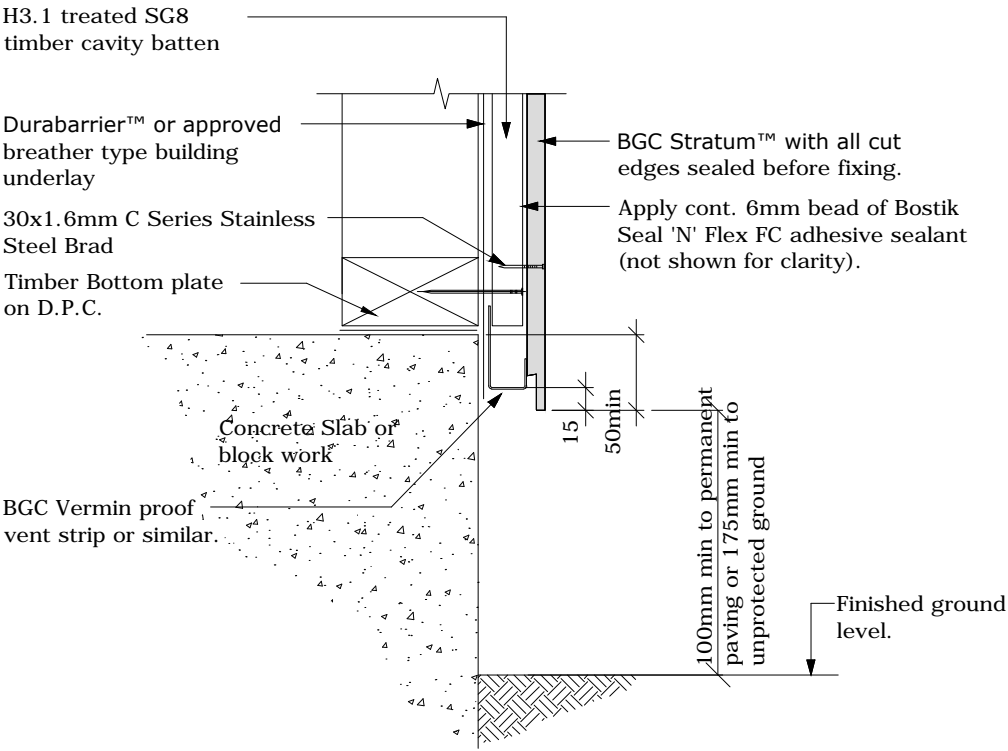




# Fibre Cement

**Cavity Batten Note:**  
 Refer to cavity batten layout for batten sizes, types, spacing's & fixings

**Cladding fixing note:**  
 Refer to cladding fixing layout for all fixing types & spacing's



PROFILE **BGC Stratum™ and Stratum™ Duo**  
 DETAIL **Foundation Detail  
 Cavity Construction**

DATE **Jan 2014**  
 SCALE **1:5 @ A4**  
 DETAIL NO. **ST-09**