

BGC

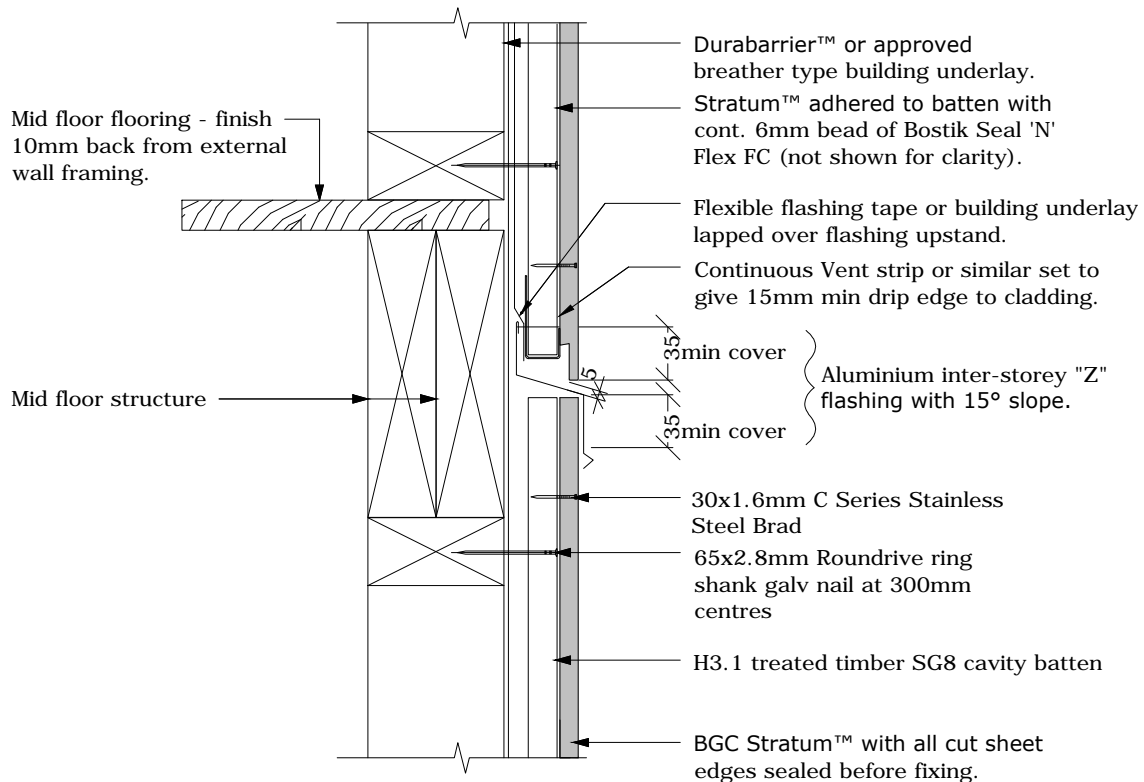
Fibre Cement

Cavity Batten Note:

Refer to cavity batten layout for batten sizes, types, spacing's & fixings.

Cladding fixing note:

Refer to cladding fixing layout for all fixing types & spacing's



Note: Drained joints must be used to limit cavities to maximum 2 stories or 7m in height in accordance with NZBC acceptable solution E2/AS1 Paragraph 9.1.9.4

PROFILE BGC Stratum™ and Stratum™ Duo

DATE Jan 2014

DETAIL Interstorey Drainage Detail
Cavity Construction

SCALE 1:5 @ A4

DETAIL NO. ST-08