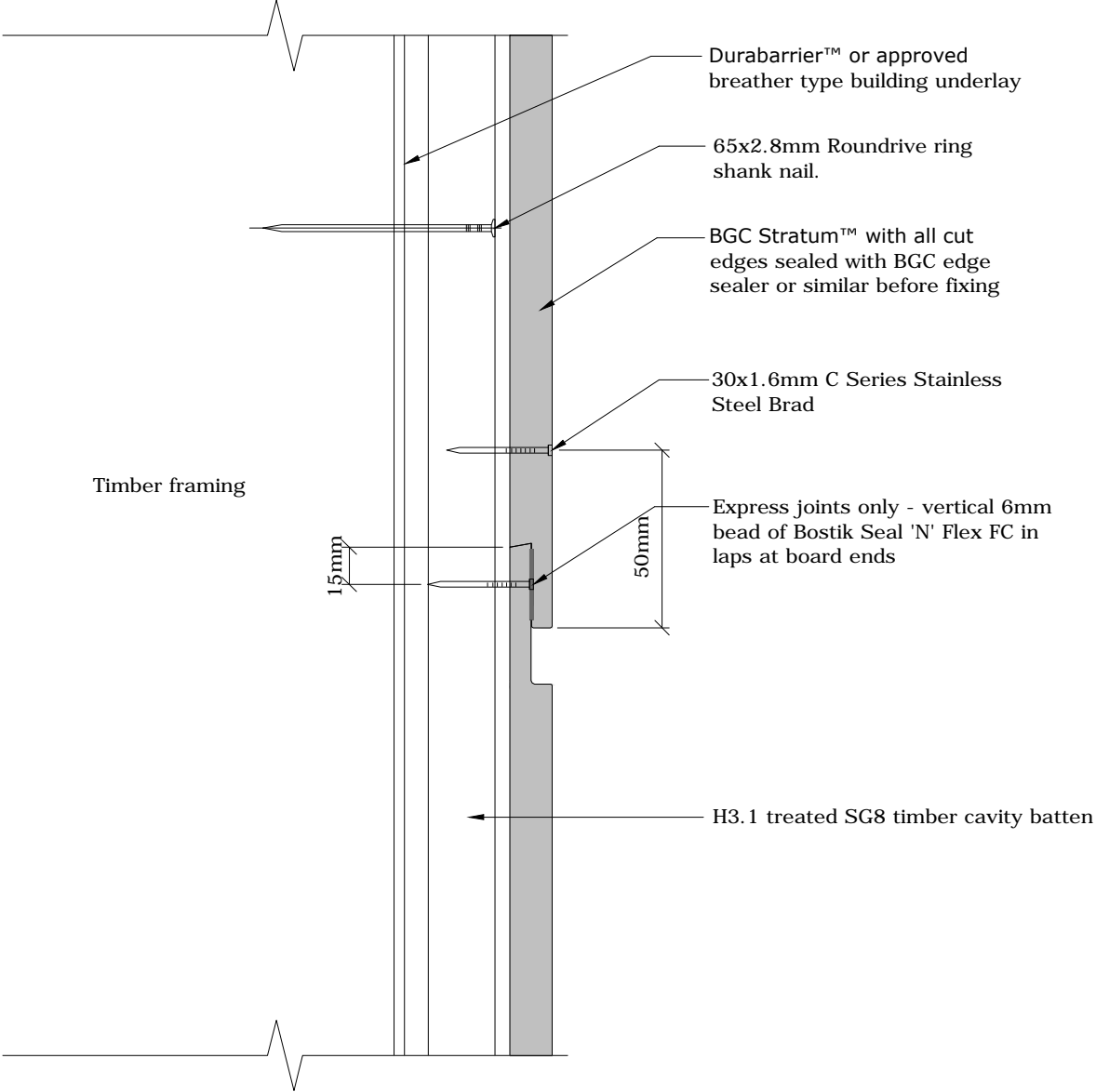




Fibre Cement



Timber framing

Durabarrier™ or approved breather type building underlay

65x2.8mm Rounddrive ring shank nail.

BGC Stratum™ with all cut edges sealed with BGC edge sealer or similar before fixing

30x1.6mm C Series Stainless Steel Brad

Express joints only - vertical 6mm bead of Bostik Seal 'N' Flex FC in laps at board ends

H3.1 treated SG8 timber cavity batten

Cavity Batten Note:
Refer to cavity batten layout for batten sizes, types, spacing's & fixings.

PROFILE BGC Stratum™ and Stratum™ Duo

DATE Jan 2014

DETAIL Horizontal Joint

SCALE 1:2 @ A4

DETAIL NO. ST-07