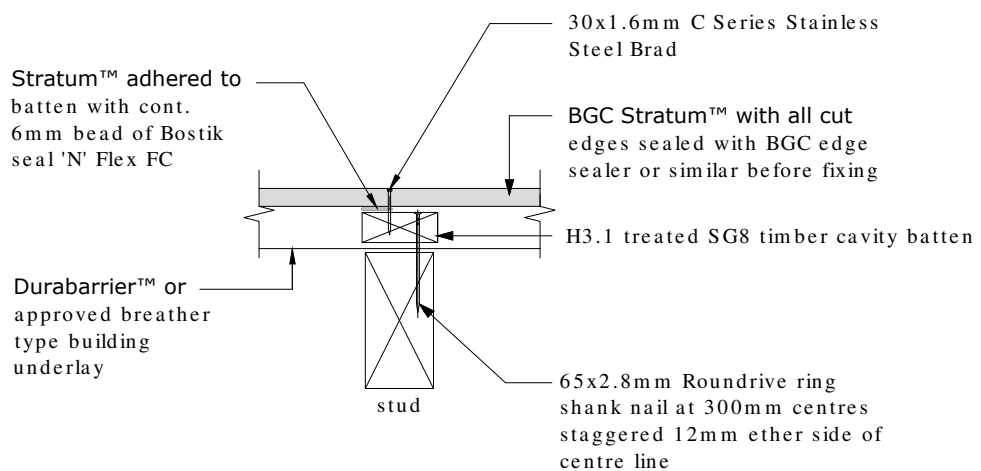


BGC**Fibre Cement****Cavity Batten Note:**

Refer to cavity batten layout for batten sizes, types, spacing's & fixings

Cladding fixing note:

Refer to cladding fixing layout for all fixing types & spacing's

PROFILE **BGC Stratum™ and Stratum™ Duo**

DATE Jan 2014

DETAIL **Intermediate Stud Fixing Cavity Construction**

SCALE 1:5 @ A4

DETAIL NO. **ST-03**