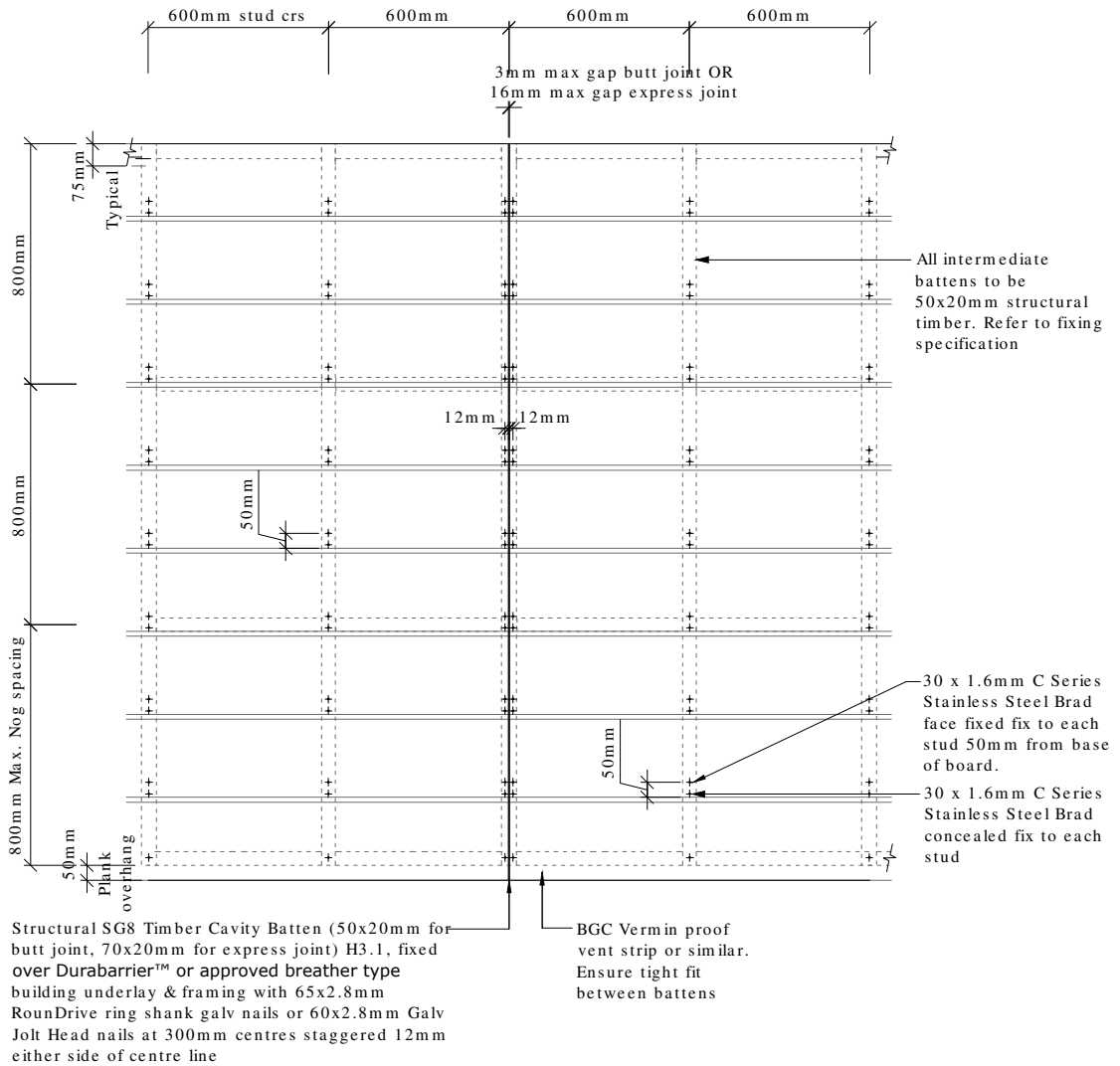


# BGC

# Fibre Cement



BGC Stratum™ Fixing setout

Note:  
Polypropylene tape omitted for clarity

Stratum Fixing options:  
30 x 1.6mm C Series Stainless steel brad

PROFILE BGC Stratum™ and Stratum™ Duo

DATE Jan 2014  
SCALE 1:25 @ A4

DETAIL Stratum™ Fixing Setout

DETAIL NO. ST-02