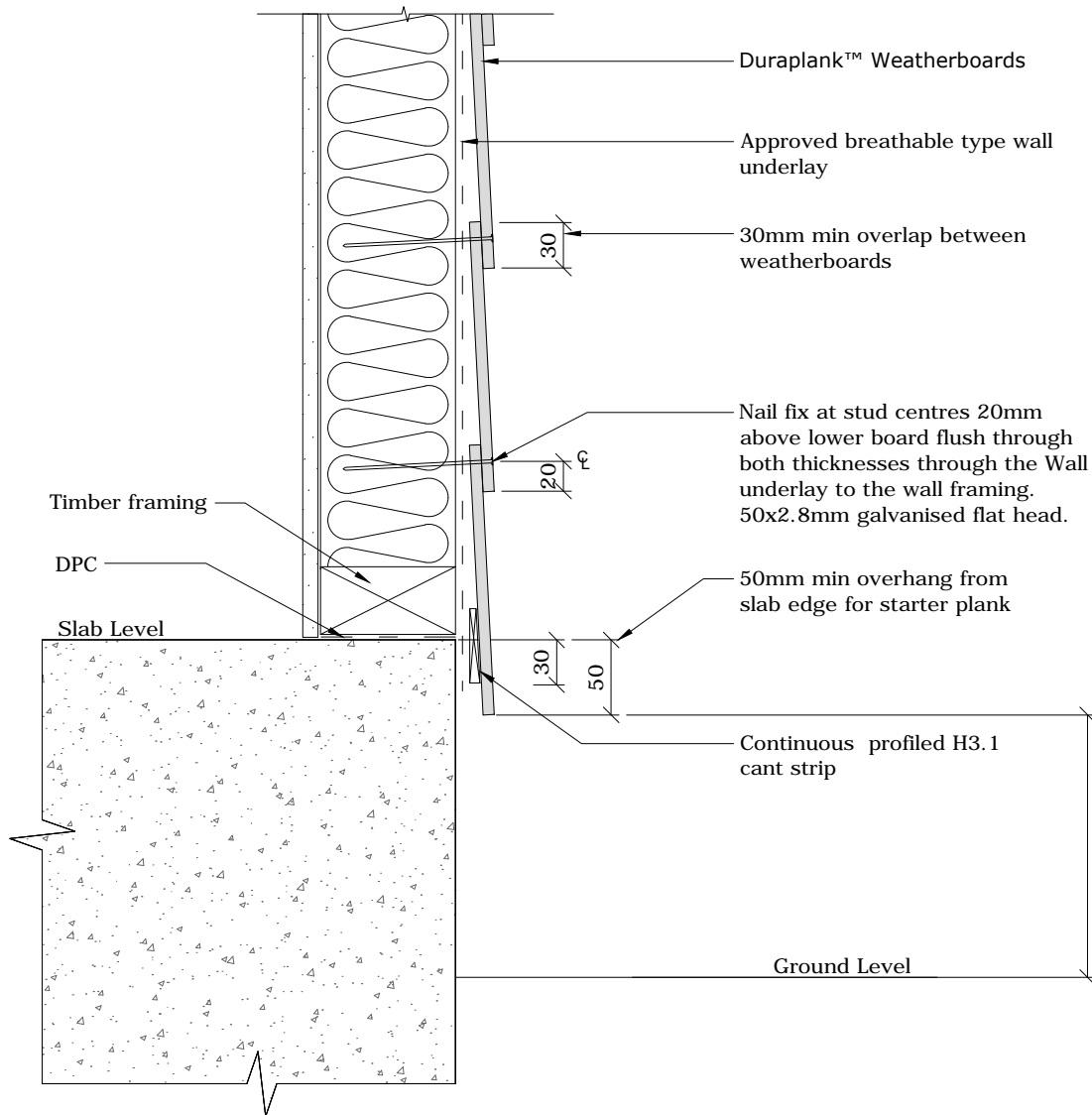


# BGC

# Fibre Cement



100mm min. to permanent paving or 175mm min to unpaved ground to clause 9.1.3 of E2/AS1

PROFILE BGC Duraplank™ Weatherboards

DATE May 2017

DETAIL Foundation Detail  
Direct Fixed

SCALE 1:5 @ A4

DETAIL NO. DU-01D