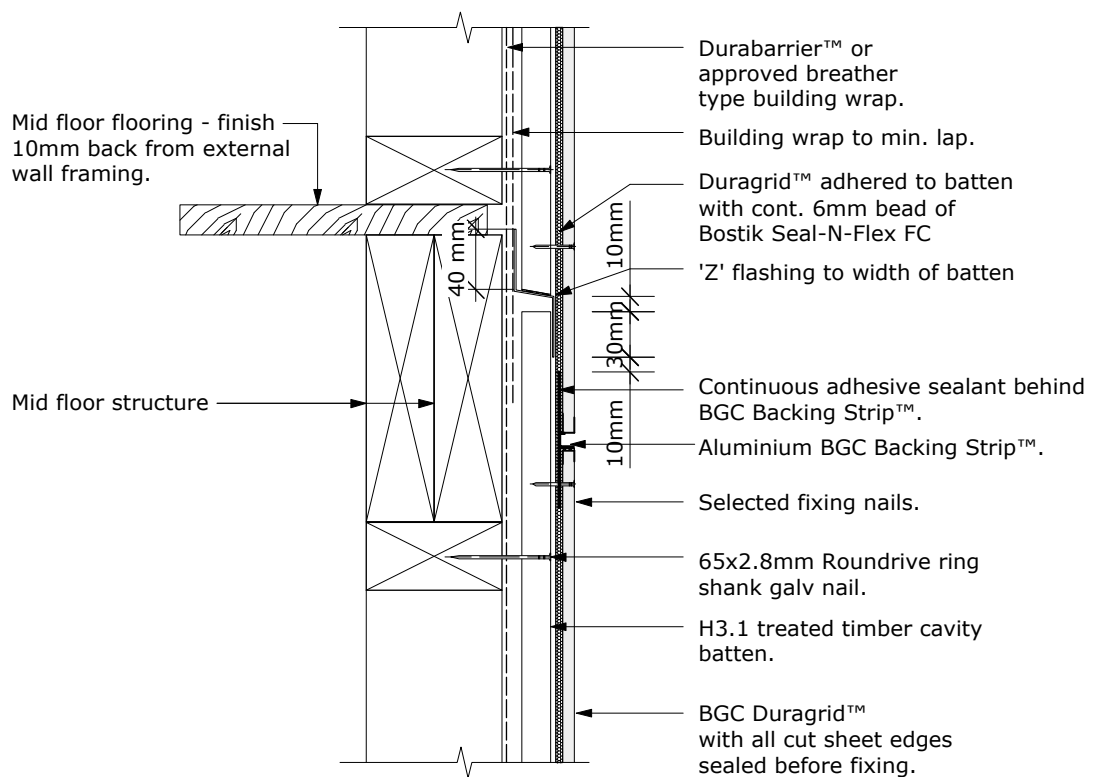


Cavity Batten Note:

Refer to cavity batten layout for batten sizes, types, spacings & fixings.



NOTE: ONLY suitable for up to 2 storeys in height. For cavities over 2 storeys in height, refer to D19

PROFILE **BGC Duragrid™**

DATE Nov 2011

DETAIL **Horizontal Joint Detail**

SCALE 1:5 @ A4

DETAIL NO. **D 20**