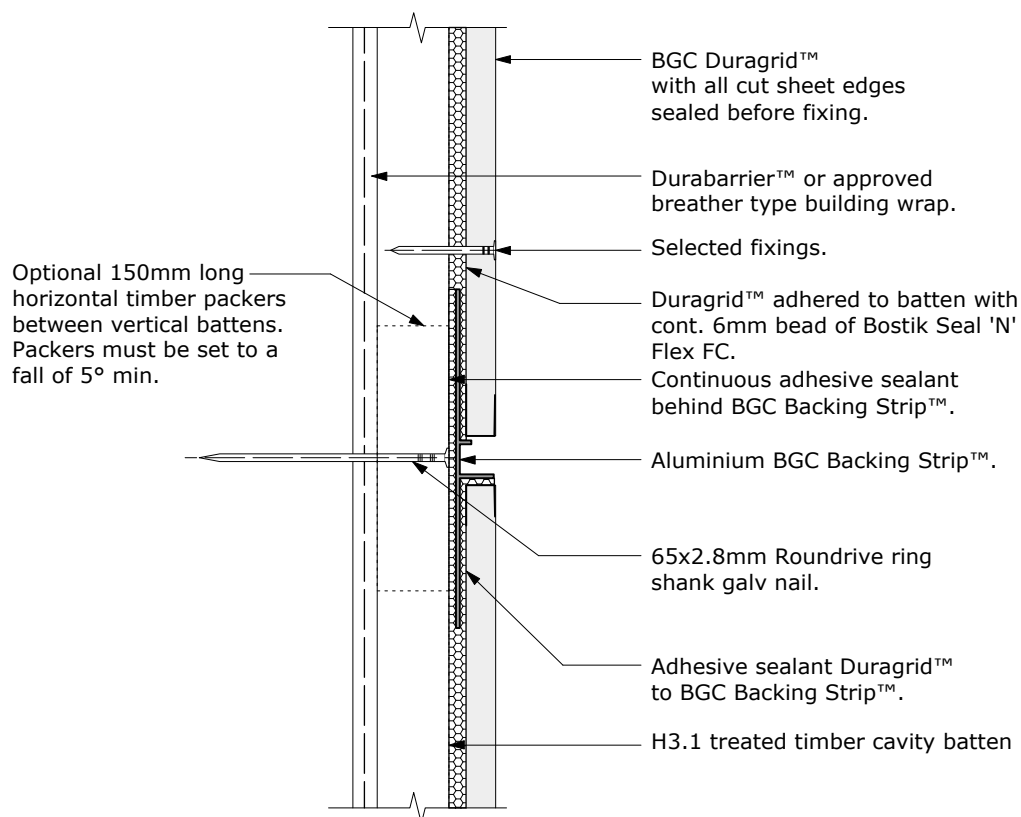


BGC**Fibre Cement****Cavity Batten Note:**

Refer to cavity batten layout for batten sizes, types, spacings & fixings.



NOTE: ONLY suitable for up to 2 storeys in height.
For cavities over 2 storeys in height, refer to D19

PROFILE **BGC Duragrid™**

DATE Nov 2011

DETAIL **Backing Strip™ Detail - Section**

SCALE 1:2 @ A4

DETAIL NO. **D 18**