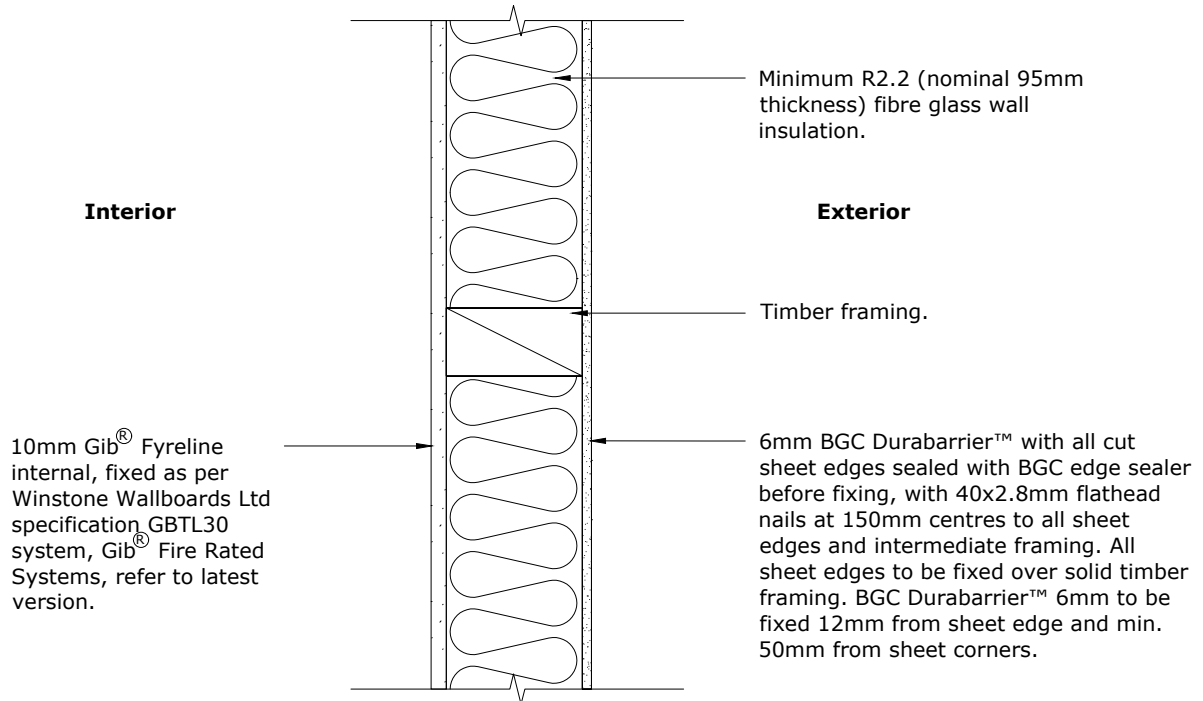




# Fibre Cement



**FIRE RATING NOTE:**  
REFER TO FIRE RATING SECTION IN BGC 6mm DURABARRIER™ PRODUCT LITERATURE FOR FURTHER FIRE RATING DETAILS

**TIMBER FRAMING:**  
TIMBER FRAMING TO BE MINIMUM 90mm DEEP x 45mm WIDE, IN ACCORDANCE WITH NZS3604. STUD AT MAXIMUM 600mm CENTERS. NOGGINGS AT MAXIMUM 800mm CENTERS. DOUBLE OR STAGGERED STUDS MAY BE USED.

**LOADINGS: MAXIMUM LOAD PER STUD, AS PER TABLE BELOW:**

ULTIMATE STRENGTH(kN PER STUD) FOR FIRE EMERGENCY LOADING FOR 30 MINUTES.

| ACTUAL STUD SIZE (mm) | Wall Height (m) |      |      |      |      |      |      |      |      |  |
|-----------------------|-----------------|------|------|------|------|------|------|------|------|--|
|                       | 2.4             | 2.7  | 3.0  | 3.3  | 3.6  | 3.9  | 4.2  | 4.5  | 4.8  |  |
| 90 x 45               | 10.5            | 8.8  | 7.4  | 6.2  | 5.3  | 4.4  | 3.7  | 3.2  | 2.6  |  |
| 140 x 45              | 31.6            | 28.6 | 25.7 | 23.0 | 20.5 | 18.3 | 16.3 | 14.5 | 12.9 |  |

PROFILE **BGC DurabARRIER™ 6mm**

DATE **Aug 2018**

DETAIL **30/30/30 Fire Rating Detail**

SCALE **1:5 @ A4**

DETAIL NO. **DB23**