

MARCH // 2020



# BGC FIBRE CEMENT PRODUCT GUIDE



# HISTORY & MISSION

BGC has state-of-the-art manufacturing facilities in Perth and distribution centres in all states of Australia and in New Zealand.

Our distribution network ensures that our entire product range is readily available.

BGC has a team of technical specialists that can assist with all specification and design information to help ensure that you always **'build it better with BGC'**.

## BGC HAS INTERESTS IN

- / Residential and commercial building
- / Building and construction products
- / Contract mining
- / Civil engineering construction and maintenance
- / Quarrying
- / Road transport
- / Property ownership and management
- / Insurance

Our mission at BGC is simple – we want to ensure that people can always **'build it better with BGC'**.

In keeping with our mission, we are constantly assessing and improving our products to ensure that we always provide cost effective, high quality and easy-to-use products to the market.



Fibre Cement



# CONTENTS

## INNOVA™ RANGE

04 // NULINE™ PLUS

05 // STRATUM™

06 // DURAGRID™

07 // DURAGROOVE™

08 // DURASCAPE™

09 // DURABARRIER™

## BGC FIBRE CEMENT RANGE

10 // DURASHEET™

11 // DURAPLANK™

12 // INTERGROOVE™

13 // DURALINER™ PLUS

14 // DURALUX™ PLUS

15 // CERAMIC TILE UNDERLAY

16 // COMPRESSED FLOORING

17 // DURACOM™

18 // STONESHEET™

19 // DURAFLOOR™

20 // WARRANTY

NULINE™ PLUS IS A WEATHERBOARD-STYLE CLADDING SYSTEM. WITH ITS PERFECT JOIN AND A SEDUCTIVE LOOK THAT ECHOES REAL TIMBER, NULINE™ PLUS IS THE NATURAL EVOLUTION OF THE EVER-POPULAR NULINE™ WEATHERBOARD.

THE NULINE™ PLUS TONGUE-&-GROOVE FITTING WILL DELIVER SEAMLESSLY CONSISTENT JOINS THROUGHOUT YOUR PROJECT. WITH ITS SLIGHT BEVEL ON THE REAR OF THE PLANK ALLOWING A 25MM BEARING FACE ON THE STUD, YOU'LL FIND FIXING AND NAILING EXCEPTIONALLY EASY.

- / FACTORY SEALED & PRIMED, READY FOR PAINTING
- / QUICK, SIMPLE INSTALLATION: MANUAL NAILING, GUN NAILING OR SCREW FIXING
- / HIGHLY DURABLE: NO ROT OR DECAY
- / BRANZ APPRAISED NO.640 AND 641 (2015)

THICKNESS (mm)	WEIGHT kg/m <sup>2</sup>	WIDTH (mm)	LENGTH (mm)
14	3.0	150	4200
	3.5	175	
	4.2	205	

#### ACCESSORIES

PRODUCT	LENGTH (mm)
Internal Corner	3000
Internal Obtuse Corner	2400
External Corner Aluminium	3000
Cavity Vent Strip 19mm or 33mm	2700
Corner Soaker Aluminium or Stainless Steel	150
Corner Soaker Aluminium or Stainless Steel	175
Corner Soaker Aluminium or Stainless Steel	205
Precut Scribes 150, 175 and 205mm	5400
BGC Edge Sealer	

**NULINE™ PLUS**  
WEATHERBOARDS



A VIBRANT, INNOVATIVE ALTERNATIVE TO TRADITIONAL WEATHERBOARDS, STRATUM™ IS AN ENDLESSLY ADAPTABLE TRIO OF PLANK PRODUCTS. CHOOSE ONE STRATUM™ PROFILE AS A STANDALONE, OR MIX'N'MATCH TWO OR THREE TO CREATE EYE-CATCHING AND ORIGINAL INNOVA EXTERIOR CLADDING.

STRATUM™ 300MM IS A WIDE PLANK WITH A 16MM HORIZONTAL JOINT; STRATUM™ DUO 300MM IS A WIDE PLANK WITH A 16MM CENTRE GROOVE AND THE LOOK OF TWO SLIMMER PLANKS; STRATUM™ TRIO 300MM WITH 2 16MM GROOVES CREATING A 3 PLANK EFFECT; STRATUM™ CONTOUR 170MM IS A SLIMMER PLANK WITH A 2MM REBATED SECTION AT THE TOP.

- / CAN BE INSTALLED HORIZONTALLY AND VERTICALLY
- / FACTORY SEALED & PRIMED, READY FOR PAINTING
- / QUICK, SIMPLE INSTALLATION: MANUAL NAILING, GUN NAILING OR SCREW FIXING
- / BRANZ APPRAISED - STRATUM™ (NO.847), STRATUM™ CONTOUR (NO.848)

THICKNESS (mm)	FINISH	WEIGHT kg/m <sup>2</sup>	WIDTH (mm)	LENGTH (mm)	
				4200	2700
12	Stratum™	5.2	300	✓	✓
	Stratum™ Woodgrain			✓	✓
	Stratum™ Duo			✓	✓
	Stratum™ Duo Woodgrain			✓	✓
	Stratum™ Trio			✓	✓
	Stratum™ Trio Woodgrain			✓	✓
10	Stratum™ Contour	2.5	170	✓	

#### ACCESSORIES

PRODUCT	LENGTH (mm)
Internal Corner 17mm	3000
External Corner 17mm	3000
External Corner - Stratum™, Stratum™ Duo and Stratum™ Trio - 2 piece - available March 2019	3600
J Jamb Flashing - Stratum™, Stratum™ Duo and Stratum™ Trio	2400
J Jamb Flashing - Stratum™ Contour	2400
Cavity Vent Strip 19mm	2700
Closer 33mm - Stratum™ Contour	2700
Precut scribes 40 x 18mm - Stratum™	5400
Precut scribes 40 x 18mm - Stratum™ Duo	5400
Precut scribes 40 x 18mm - Stratum™ Trio	5400
Precut scribes 40 x 18mm - Stratum™ Contour	5400
BGC Edge Sealer	
BGC Horizontal Batten (castellated) - 45 x 20mm	2700

## STRATUM™ WEATHERBOARDS





BGC'S MARKET-LEADING FIBRE CEMENT SHEETING MAKES THE DURAGRID™ FACADE SYSTEM A WISE CHOICE FOR CLADDING EXTERIORS OF LOW TO MEDIUM-RISE CONSTRUCTION. EXTREMELY ROBUST AND HARDWEARING, DURAGRID™ WILL GIVE ANY BUILDING AN EXCITINGLY MODERN SHEEN.

WITH ITS SMOOTH, FLAT SURFACE, A SQUARE-EDGE FINISH SIMPLY MADE FOR EXPRESSED JOINTING AND PANELS THAT WON'T ROT, BURN OR CORRODE, DURAGRID™ ENABLES EASY DECORATION IN AN EXCITING VARIETY OF DESIGN FINISHES.

- / LIGHTWEIGHT, MODERN AND HIGHLY DURABLE
- / CAN BE USED IN WIND ZONES UP TO AND INCLUDING EXTRA HIGH (NZS3604:2011)
- / PERFECT FOR A RANGE OF FINISHES – FROM PAINTED TO TEXTURED COATINGS
- / UNAFFECTED BY, AIR, STEAM, SALT OR SUNLIGHT
- / QUICK, SIMPLE BRAD INSTALLATION
- / BRANZ APPRAISED NO. 752 (2011)

THICKNESS (mm)	WEIGHT kg/m <sup>2</sup>	WIDTH (mm)	LENGTH (mm)		
			1190	2390	2990
9	13.5	590		✓	
		1190	✓	✓	✓

#### ACCESSORIES

PRODUCT	LENGTH (mm)
Horizontal Backing Strip	1200
	2400
	3000
Cavity Vent Strip - 19mm	2700
BGC Edge Sealer	
BGC Batten - 70 x 20mm	5400

## DURAGRID™ FACADE SYSTEM

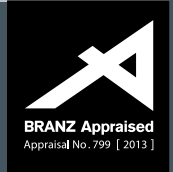


FOR UP-TO-THE-MINUTE EXTERIORS OR INTERIORS, CHOOSE DURAGROOVE™ CLADDING. A PEERLESSLY ADAPTABLE, VERTICALLY-GROOVED PANEL AVAILABLE IN DIFFERENT PROFILES AND SPACING, DURAGROOVE™ HAS A SHIPLAP JOIN TO EASE AND SPEED YOUR INSTALLATION.

SPECIFY DURAGROOVE™ FOR SINGLE-STOREY AND MEDIUM-HEIGHT PROJECTS. DURAGROOVE™ COMES IN THREE VARIANTS: SMOOTH WIDE (150MM); SMOOTH EXTRA WIDE (400MM); SMOOTH NARROW (100MM); AND WOODGRAIN WIDE (150MM).

- / VERTICAL GROOVES – EXCITINGLY CONTEMPORARY ALTERNATIVE TO TRADITIONAL WEATHERBOARD
- / LIGHTWEIGHT AND DURABLE
- / ACRYLIC SEALED PANELS AID PAINT APPLICATION
- / QUICK TO INSTALL – NO NEED FOR TAPED AND FILLED JOINTS
- / PANELS RESISTANT TO AIR, STEAM, SALT AND SUNLIGHT
- / BRANZ APPRAISED NO. 799 AND 798 (2013)

## DURAGROOVE™ FACADE SYSTEM



THICKNESS (mm)	FINISH	WEIGHT kg/m <sup>2</sup>	WIDTH (mm)	LENGTH (mm)		
				2450	2750	3000
9	Smooth Narrow	13.5	1200	✓	✓	✓
	Smooth Wide			✓	✓	✓
	Smooth Extra Wide			✓	✓	✓
	Woodgrain			✓	✓	✓

### ACCESSORIES

PRODUCT	LENGTH (mm)
Internal Corner	3000
External Corner	3000
Horizontal 'h' Flashing	3000
Cavity Vent Strip - 19mm	2700
BGC Edge Sealer	



DURASCAPE™ IS A 9MM-THICK BASE SHEET. EXCELLENT FOR COVERING LARGE AREAS, ITS 5MM WIDE SHIPLAP JOINT GIVES THE SHEET A SUBTLE VERTICAL SHADOW LINE.

TO CREATE AN APPEALINGLY 'RENDERED' LOOK, TRY FINISHING DURASCAPE™ ONSITE WITH A ROLL-ON TEXTURED PAINT.

- / LIGHTWEIGHT AND DURABLE
- / IDEAL FOR SINGLE-STOREY AND MEDIUM HEIGHT INSTALLATIONS WHERE YOU WANT LARGE PANELS
- / QUICK INSTALLATION – NO NEED FOR TAPED AND FILLED JOINTS
- / PANELS UNAFFECTED BY AIR, STEAM, SALT AND SUNLIGHT
- / CAN BE FINISHED IN A RANGE OF DECORATIVE COATINGS
- / BRANZ APPRAISED NO. 799 AND 798 (2013)

THICKNESS (mm)	WEIGHT kg/m <sup>2</sup>	WIDTH (mm)	LENGTH (mm)	
			2450	3000
9	13.5	1200	✓	✓

#### ACCESSORIES

PRODUCT	LENGTH (mm)
Internal Corner	3000
External Corner	3000
Horizontal 'h' Flashing	3000
Cavity Vent Strip -19mm	2700
BGC Edge Sealer	

## DURASCAPE™

### FACADE SYSTEM





DURABARRIER™ IS A RIGID SHEATHING/ AIR BARRIER FOR ALL TYPES OF RESIDENTIAL AND COMMERCIAL TIMBER-FRAMED OR STEEL FRAMED BUILDINGS. DURABARRIER™ RESISTS HIGH WINDS BY EQUALISING AIR PRESSURE WITHIN THE CAVITY TO EXTERNAL CONDITIONS.

DURABARRIER CAN BE CHOSEN AS EITHER A 4.5MM OR 6MM THICK FIBRE CEMENT SHEET, SEALED ON THE FACE AND EDGES AND SPECIALLY MANUFACTURED FOR USE AS A RIGID SHEATHING.

- / LIGHTWEIGHT AND DURABLE
- / CORRECT INSTALLATION WILL ENSURE RESISTANCE TO MOISTURE DAMAGE AND ROT
- / SUITABLE FOR UP TO THE EXTRA HIGH WIND ZONE OR UP TO 2.5KPA (ULS) FOR SPECIFIC DESIGN
- / FACE-SEALED TO RAPIDLY DISPLACE MOISTURE
- / PROVIDES SHORT TERM WEATHERTIGHTNESS
- / TEMPORARILY SECURES BUILDINGS AHEAD OF CLADDING
- / BOTH 4.5 AND 6MM CAN BE USED FOR BRACING
- / BRANZ APPRAISED (NO 721, 2019) AND TESTED AGAINST TABLE 23, NZBC ACCEPTABLE SOLUTION E2/AS1

## DURABARRIER™

RIGID SHEATHING / AIR BARRIER



THICKNESS (mm)	WEIGHT kg/m <sup>2</sup>	WIDTH (mm)	LENGTH (mm)		
			2450	2750	3000
4.5	6.6	1200	✓	✓	
6	8.8		✓		✓

# DURASHEET™

EAVES & SOFFIT LINING

DURASHEET™ PROVIDES FIRST RATE EXTERNAL CLADDING FOR GABLE ENDS, EAVES, SOFFITS, CAR PORTS AND VERANDAH LININGS. IT'S A GENERAL-PURPOSE SHEET YOU CAN USE ON BOTH TIMBER AND STEEL-FRAMED BUILDINGS.



Durasheet™ comes in three thicknesses to suit both residential and light commercial applications, significantly extending your professional specifying choice.

## DURASHEET™

- / 4.5mm thickness: used mainly in timber-framed residential buildings for soffit/eaves linings
- / 6.0mm thickness: recommended for residential and light commercial applications, high wind zones and steel framed constructions
- / 7.5mm thickness: recommended for commercial applications
- / Classified as Type A Category 2 for exterior use
- / Can be used for bracing and fire rated walls

THICKNESS (mm)	WEIGHT kg/m <sup>2</sup>	WIDTH (mm)	LENGTH (mm)			
			1800	2400	2700	3000
4.5	6.6	450		✓		
		600		✓		
		750		✓		
		900	✓	✓		
		1200	✓	✓	✓	✓
6	8.8	900		✓		
		1200	✓	✓	✓	✓
7.5	10.9	1200	✓	✓	✓	✓

4.5mm 6mm & 7.5mm  
Square Edge

# DURAPLANK™

WEATHERBOARDS

IN ITS APPEALING LOOKS AND ITS EASY INSTALLATION, THE DESIGN OF DURAPLANK™ EVOQUES TRADITIONAL WEATHERBOARDS. DURAPLANK™ WON'T DECAY, ROT AND IT'S NON-COMBUSTIBLE.



Beautifully attractive – you have the option of a smooth finish, or a woodgrain (Douglas Fir) for an authentic weatherboard look – Duraplank™ also has the strength to withstand the rigours of family life.

### DURAPLANK™

- / Similar flavour to traditional weatherboards
- / No decay or rot
- / Safe and durable – needs only minimum maintenance
- / Variety of finishes

THICKNESS (mm)	WEIGHT l/m	WIDTH (mm)	PATTERN	LENGTH (mm)
7.5	2.0	180	Smooth	4200
	2.5	230	Smooth & Woodgrain	
	3.3	300	Smooth & Woodgrain	

#### Accessories

PRODUCT	LENGTH (mm)	PRODUCT	LENGTH (mm)
External Corner Soakers Aluminium	180	Concealed Joint Soakers	180
External Corner Soakers Aluminium	230	Concealed Joint Soakers	230
External Corner Soakers Aluminium	300	Concealed Joint Soakers	300
Internal Corner – Aluminium – 17mm	3000	External Corner - Aluminium - 17mm	3000



# INTERGROOVE™

## INTERNAL LINING BOARDS

USE INTERGROOVE™ INTERNAL WALL LINING TO CREATE A MODERN FLOOR TO CEILING FEATURE WALL OR HALF HEIGHT TO CREATE A MORE TRADITIONAL LOOK. INTERGROOVE™ IS A STRONG AND DURABLE WALL PANEL THAT HAS BEEN SPECIFICALLY DESIGNED FOR INTERNAL USE.



The V shaped groove featured in InterGroove™ provides the look of traditional panelling combined with the durability and ease of maintenance of fibre cement.

### INTERGROOVE™

- / Is lightweight and durable
- / Quick to install as it eliminates the need for taped and filled joints
- / Factory sealed panels aid paint application
- / Provides a tough durable finish, ideal for areas where impact and moisture resistance is required

THICKNESS (mm)	WEIGHT kg/m <sup>2</sup>	WIDTH (mm)	LENGTH (mm)
			2700
7.5	11.2	1200	✓

# DURALINER<sup>TM</sup> PLUS

INTERIOR LINING BOARD

DURALINER<sup>TM</sup> PLUS IS A GENERAL-PURPOSE FIBRE CEMENT LINING BOARD. DESIGNED FOR FLUSH JOINTING, DURALINER<sup>TM</sup> PLUS IS HIGHLY EFFECTIVE FOR USE IN WET AREAS, INTERIOR LININGS, CEILINGS, AS A SUBSTRATE FOR CERAMIC WALL TILES AND FOR FIRE AND ACOUSTICALLY-RATED INTERIOR WALLS.



You can also specify Duraliner<sup>TM</sup> Plus for soffits and other external applications where there'll be no direct impact from the weather.

### DURALINER<sup>TM</sup> PLUS

- / Wide range of applications
- / Face-coated sheet with green-tinted sealant
- / Rebated on 3 edges for easy jointing and installation

THICKNESS (mm)	WEIGHT kg/m <sup>2</sup>	WIDTH (mm)	LENGTH (mm)			
			2400	2700	3000	3600
6	8.9	900	✓			
		1200	✓	✓	✓	✓
9	13.2	1200	✓	✓	✓	✓



6mm & 9mm  
Recessed Edge

# DURALUX<sup>TM</sup> PLUS

CEILING WALL & SOFFIT LINING

DURALUX<sup>TM</sup> PLUS IS A GENERAL-PURPOSE FIBRE CEMENT BUILDING BOARD WHICH YOU CAN USE FOR MANY DIFFERENT AND DEMANDING APPLICATIONS. AMONG THESE ARE INTERIOR LINING, DOMESTIC AND COMMERCIAL SOFFITS, EXPOSED BEAM CEILINGS, IN WET AREAS AND AS A SUBSTRATE FOR CERAMIC WALL TILES.



Quick and easy to apply to timber or steel, its two available thicknesses make Duralux<sup>TM</sup> Plus a flawless choice for many domestic and commercial applications.

## DURALUX<sup>TM</sup> PLUS

- / Easy, correct installation and maintenance will ensure full water resistance
- / Simply decorated in a variety of finishes
- / Classified as Type B Category 2 product for use in applications sheltered from direct weathering

THICKNESS (mm)	WEIGHT kg/m <sup>2</sup>	WIDTH (mm)	LENGTH (mm)		
			2400	3000	3600
6	8.9	1200	✓	✓	✓
9	13.2	1200	✓	✓	



6mm & 9mm Square Edge



# CERAMIC TILE UNDERLAY

FLOORING SUBSTRATE

CERAMIC TILE FLOOR UNDERLAY IS A SPECIALLY-FORMULATED FIBRE CEMENT SHEET. IT'S DESIGNED AS A STABLE SUBSTRATE FOR SLATE AND CERAMIC FLOOR TILES, SO YOU CAN INSTALL CERAMIC TILE FLOOR UNDERLAY OVER NEW OR EXISTING TIMBER FLOORBOARDS, PLYWOOD OR PARTICLEBOARD FLOORING.



In dry areas, apply directly to Ceramic Tile Floor Underlay for an impervious, easily-cleaned surface. In wet areas and anywhere subject to accidental flooding or water-splash, install a waterproof membrane between the Underlay and your tiling.

### CERAMIC TILE UNDERLAY

- / Specially-manufactured fibre cement sheet
- / Excellent substrate for floor tiles, both slate and ceramic
- / For dry and wet areas (see above)
- / Can be applied to both new and existing timber floorboards, plywood or particleboard

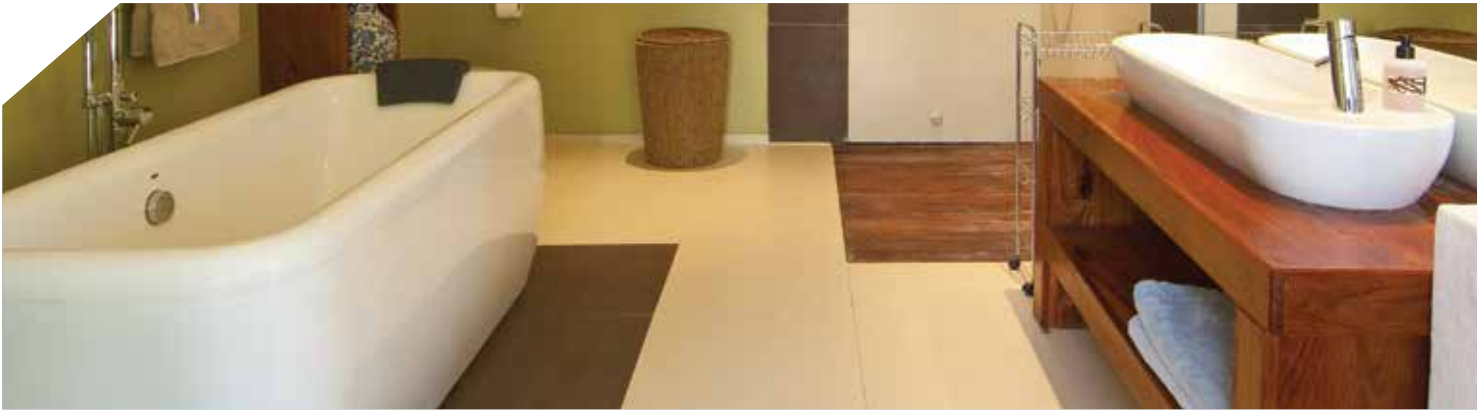
THICKNESS (mm)	WEIGHT kg/m <sup>2</sup>	WIDTH (mm)	LENGTH (mm)
			1800
6	8.8	900	✓
		1200	✓



# COMPRESSED FLOORING

## FLOORING SUBSTRATE

HIGH-DENSITY BGC COMPRESSED FIBRE CEMENT SHEETING IS A SUPERLATIVE SUBSTRATE FOR INTERIOR FLOORS IN FRAMED-CONSTRUCTION WET AREAS. FINE FOR UPPER STORIES AND TRANSPORTABLE BUILDINGS, IT'S EQUALLY SUITED FOR USE IN THE CLADDING OF EXTERIOR DECKS.



Compressed Fibre Cement sheeting is manufactured from Portland cement, finely-ground silica, cellulose fibres and water. After forming, we compress the sheeting to high density, and then cure it in a high-pressure steam autoclave for an exceptionally durable, fit-for-purpose product.

### COMPRESSED FLOORING

- / Immune to permanent water damage
- / Impact-resistant
- / Highly durable and dimensionally stable
- / Suitable for wet areas and for cladding external decking
- / Non-combustible and easy to work

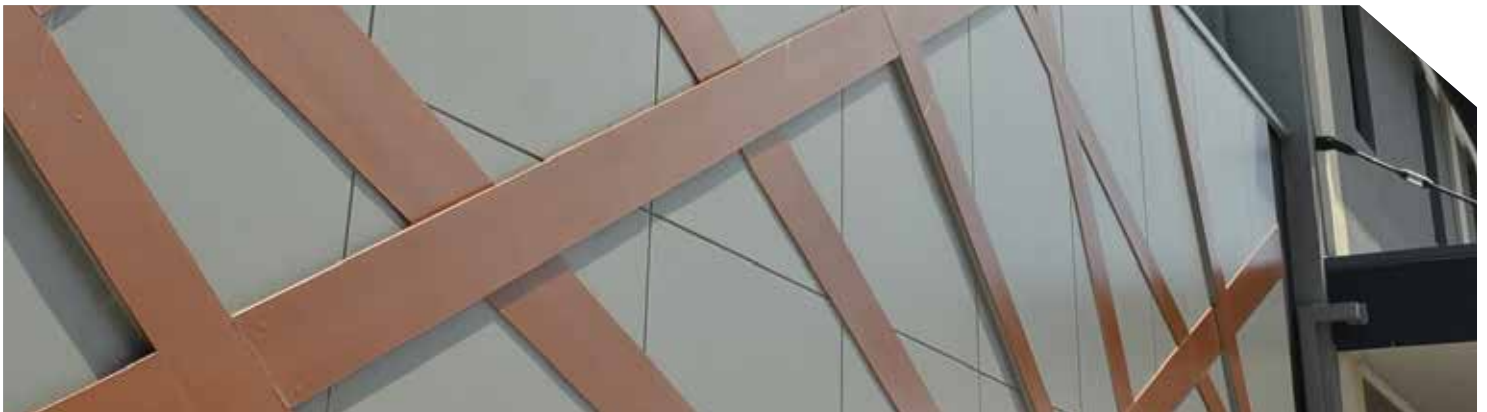
THICKNESS (mm)	WEIGHT kg/m <sup>2</sup>	WIDTH (mm)	LENGTH (mm)	
			1800	2400
12	20.7	1200		✓
15	26			✓
18	31.1		✓	✓
24	41.2			✓

\*24mm available on an order only basis. Confirm quantity requirements and availability with BGC Fibre Cement

# DURACOM™

FACADE SYSTEM

WITH ITS SMOOTH, FLAT SURFACE AND SQUARE-EDGE FINISH, DURACOM™ FACADE SYSTEM IS IDEAL FOR THE EXTERIOR CLADDING OF LOW TO MEDIUM-RISE BUILDINGS. UTILISING BGC'S TRUSTED FIBRE CEMENT-COATED COMPRESSED SHEETING, DURACOM™ DELIVERS A STRIKINGLY MODERN, DURABLE FINISH.



Lightweight, yet exceptionally resilient, Duracom™ Facade system is perfect for expressed jointing and a variety of finishes – from painted to textured coatings.

### DURACOM™

- / Weather resistant – simply shrugs off water damage
- / Fully sealed, balanced panels won't rot, burn or corrode
- / Allows easy decoration in a range of design finishes
- / Rapid installation

THICKNESS (mm)	WEIGHT kg/m <sup>2</sup>	WIDTH (mm)	LENGTH (mm)		
			1800	2400	3000
9	14.6	1200	✓	✓	✓

### Accessories

PRODUCT	LENGTH (mm)
Primary Top Hat – Galvanised Steel	120 x 35 x 1.15 BMT 5400
Intermediate Top Hat – Galvanised Steel	50 x 35 x 1.15 BMT 5400
Horizontal Backing Strip	1190
	2390
	2990
EPDM Foam Gasket	25m



# STONESHEET™

STONE TILE SUBSTRATE

STONESHEET™ IS YOUR FIRST CALL FOR A STONE TILE SUBSTRATE AND BACKGROUND FOR TRUE MASONRY ON TIMBER OR STEEL-FRAMED BUILDINGS. A FLAT, SQUARE-EDGED SHEET, STONESHEET™ COMES AS 7.5MM & 9MM-THICK PANELS.



Designed specially as a substrate for both interior and exterior applications, Stonesheet™ is an excellent alternative where other non-specifically designed substrates have been used.

## STONESHEET™

- / Exterior and interior stone tile facades
- / Classified type A category 3 for exterior use

THICKNESS (mm)	WEIGHT kg/m <sup>2</sup>	WIDTH (mm)	LENGTH (mm)
			3000
7.5	10.9	1200	✓
9	13.2		✓

### Accessories

PRODUCT	LENGTH (mm)
Joint Tape	20m x 60mm
BGC Edge Sealer	

# DURAFLOOR™

FLOORING SYSTEM

YOUR ULTIMATE FLOORING SOLUTION, DURAFLOOR™ IS SUPERB FOR INTERIOR WET AREAS SUCH AS BATHROOMS AND LAUNDRIES. YOU CAN ALSO SPECIFY DURAFLOOR™ FOR A VARIETY OF EXTERIOR USES.



Choose Durafloor™ for balconies, verandas and sundecks. Alternatively, where premium quality is your main concern, insist on Durafloor™ as a total floor solution.

### DURAFLOOR™

- / Easy installation via traditional gun-nailing methods
- / Installation costs lower than standard compressed sheet
- / Same tongue-&-groove technology as traditional sheet flooring
- / Greater impact resistance – feels more solid underfoot than timber-based sheet flooring products

THICKNESS (mm)	WEIGHT kg/m <sup>2</sup>	WIDTH (mm)	LENGTH (mm)		
			2250	2400	2700
19	26.2	600	✓		✓
22	30.3	600		✓	

Weights are based on Equilibrium Moisture Content

# WARRANTY

BGC (Aust) Pty Ltd trading as BGC Fibre Cement NZ warrants, subject to the Conditions and Notes set out below, that its products be:

- 1) Free from defects caused by defective materials or workmanship (manufacturer); and
- 2) Resistant to rotting, fire and cracking,

For the following period from the date of purchase of each product:

- 25 years for Nuline™ Plus
- 50 years for Durabarrier (when used as bracing sheets)
- 15 year for all other products.

If you purchase any BGC Fibre Cement (NZ) product and find that it does not meet the above warranty during the relevant warranty period, BGC Fibre Cement (NZ) will at its option, repair or replace the product, supply equivalent replacement products or reimburse the purchase price of the product, subject to receiving a valid claim, product inspection and confirmation of the existence of a defect by BGC Fibre Cement (NZ). We will bear the cost of any such repair, replacement or refund.

## CONDITIONS

i) This warranty is non-transferable. To claim under this warranty you must submit proof of purchase and a written claim to BGC Fibre Cement (NZ) at the following address:

77 Cryers Road, East Tamaki, Auckland.  
Postal Address PO Box 76695, Manukau City, Auckland

ii) The product must be installed and maintained in accordance with the relevant BGC Fibre Cement (NZ) literature current and available at the time of purchase. All additional products used in conjunction with the BGC Fibre Cement product(s), including accessories, jointing systems and coatings must be applied or installed according to the relevant manufacturer's instructions.

iii) Claims must be submitted in writing within 30 days of the defect becoming reasonably apparent. If the defect is detected prior to installation, the claim must be submitted prior to installation.

iv) Your sole remedy under this warranty is the repair or replacement of the product, supply of equivalent replacement product or reimbursement of the purchase price as described above. BGC Fibre Cement (NZ) is not liable for any damage or losses (direct or indirect) including (without limitation) any property damage

or personal injury, economic loss or loss of profits, consequential loss arising in contract or negligence or howsoever arising.

v) BGC Fibre Cement (NZ) is not liable for any claims, damages or defects arising from or attributed to:

- poor workmanship, poor design or detailing of the project,
- products not supplied by BGC Fibre Cement (NZ),
- settlement or structural movement or - movement of materials to which the product is attached,
- incorrect design of the structure,
- acts of God, including but not limited to floods, cyclones, earthquakes or severe weather or unusual climate conditions,
- performance of coatings or paints applied to the product,
- normal wear and tear, growth of mould, mildew, fungi, bacteria or any other organism on the product's surface (exposed or unexposed),

Failure to comply with all relevant requirements of the current New Zealand Building Code regulations and standards in the design and construction of the project.

Please note that:

- If any remedy under this warranty involves recoating or painting of BGC Fibre Cement (NZ) products, there may be slight colour differences between the replacement product and the original products due to the effect weathering and variations in materials over time.
- BGC Fibre Cement (NZ) does not warrant any product's suitability for any purpose or ability to comply with the relevant conditions set out in the New Zealand Building Code. It is the responsibility of the building designer to ensure that the products used are suitable for the intended project and that specific design is conducted where appropriate. All warranties, conditions, liabilities and obligations other than those specified in this warranty are excluded to the fullest extent allowed by the law.
- The instructions and recommendations in BGC Fibre Cement (NZ) literature are based on good building practice, but are in no way an exhaustive statement of all relevant information and are subject to conditions above. BGC Fibre Cement has tested the performance of its products when installed in accordance with the products technical specification, in accordance with the standards required by the New Zealand Building Code.









TO CONTACT YOUR NEAREST  
BGC STOCKIST, PLEASE CALL:

**ADELAIDE**  
TELEPHONE  
08 8250 4962

**PERTH**  
TELEPHONE  
08 9334 4900

**NEW ZEALAND**  
TELEPHONE  
09 273 1457

**BRISBANE**  
TELEPHONE  
07 3271 1711

**SYDNEY**  
TELEPHONE  
02 9771 9660

**FREE PHONE**  
0800 424 234

**MELBOURNE**  
TELEPHONE  
03 9392 9444

Build it better with **BGC**

**BGC**

Fibre Cement

Design by **The SHAPE Group** [www.theshapegroup.com.au](http://www.theshapegroup.com.au) BGC1228

